



# YES on Measure U1

The Only *Real* Affordable Housing Measure On The Berkeley Ballot...

Measure U1 was put on the ballot by a unanimous vote of the City Council and supported by:

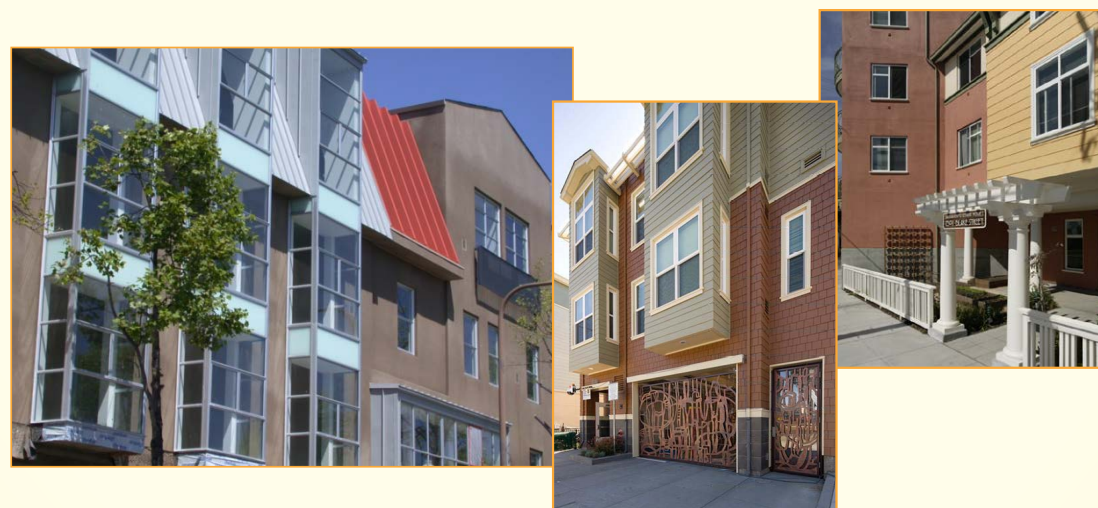


# YES on Measure U1

**Raises \$3.5 Million for Affordable Housing  
Paid for by Landlords, Not Renters**

**Measure U1** the *only* measure on the Berkeley ballot that offers a *real* solution to our affordable housing crisis. Placed on the ballot by a unanimous vote of the City Council, it generates \$3.5 million for affordable housing, paid for by big landlords who have been making profits, not renters.

Measure U1 produces more than three times what the deceptive Measure DD will raise and will make a real difference for seniors, working families and all who are struggling to afford a home in Berkeley.



# NO on Measure DD

**THE BIG LANDLORD DECEPTION THAT FAILS TO ADDRESS  
OUR AFFORDABLE HOUSING CRISIS**

**Measure DD** is a phony attempt to deceive voters, bankrolled with hundreds of thousands of dollars from big landlords.

DD lets big landlords off the hook and will raise less than one third of the money produced by Measure U1. Don't be fooled – only one measure will really make a dent in our housing crisis, and it's *not* DD, the Big Landlord Deception.



Paid for by the Committee for Safe and Affordable Homes to Support Measure U1 and Oppose Measure DD, 2081 Center Street, Berkeley, CA 94704. Major funding provided by non-profit housing developers BRIDGE Housing (\$10,000), Resources for Community Development (\$10,000) and Satellite Affordable Housing Associates (\$5,250), affordable housing advocate Stephen Barton, Ph.D. (\$5,135) and Northern California Carpenters Regional Council Issues PAC (\$5,000). Campaign ID No. 1386486.

# These Respected Organizations Have Sorted Out the Dueling Measures and the Attempt by Big Landlords to Deceive Voters

**We Urge You To Vote YES on Measure U1**



Berkeley Tenants Union



Bay Area **Community** Land Trust

Berkeley Student Cooperative  
 BRIDGE Housing  
 Building Opportunities for Self-Sufficiency (BOSS)  
 East Bay Housing Organizations  
 Everyone Home  
 Resources for Community Development  
 Satellite Affordable Housing Associates  
 Tenants Together  
 Easy Does It  
 Berkeley Progressive Alliance  
 Democratic Socialists of America, East Bay Chapter  
 East Bay Citizens for Action  
 East Bay Young Democrats  
 Green Party of Alameda County  
 John George Democratic Club  
 Wellstone Democratic Renewal Club

Associated Students of the University of California  
 Berkeley Student Cooperative  
 Progressive Student Association  
 Carpenters Union, Local 713  
 Service Employees International Union, Local 1021

Mayor Tom Bates  
 Councilmember Maxwell Anderson  
 Councilmember Jesse Arreguin  
 Councilmember Laurie Capitelli  
 Councilmember Lori Droste  
 Councilmember Linda Maio  
 Councilmember Darryl Moore  
 Councilmember Susan Wengraf  
 Councilmember Kriss Worthington

Andy Katz, East Bay Municipal Utility District Board  
 Jesse Townley, Chair, Rent Stabilization Board  
 Katherine Harr, Vice-Chair, Rent Stabilization Board  
 Sheila Jordan, Alameda County Superintendent of Schools, Emerita  
 Sandre Swanson, State Assembly Member, 2006 – 2012  
 James Chang, Rent Stabilization Board  
 Paola Laverde, Rent Stabilization Board  
 Lisa Stephens, former Chair, Rent Board, former Chair, Parks & Recreation Commission  
 John Selawsky, Rent Stabilization Board, Berkeley School Board, 2000 – 20012  
 Judy Shelton, Rent Stabilization Board

**Vote YES on Measure U1**

[www.fundaffordablehousing.org](http://www.fundaffordablehousing.org)